

Developing the
workforce of Ireland
through enterprise
led learning

Total
people
trained
56,182

Male
56%

Female
44%



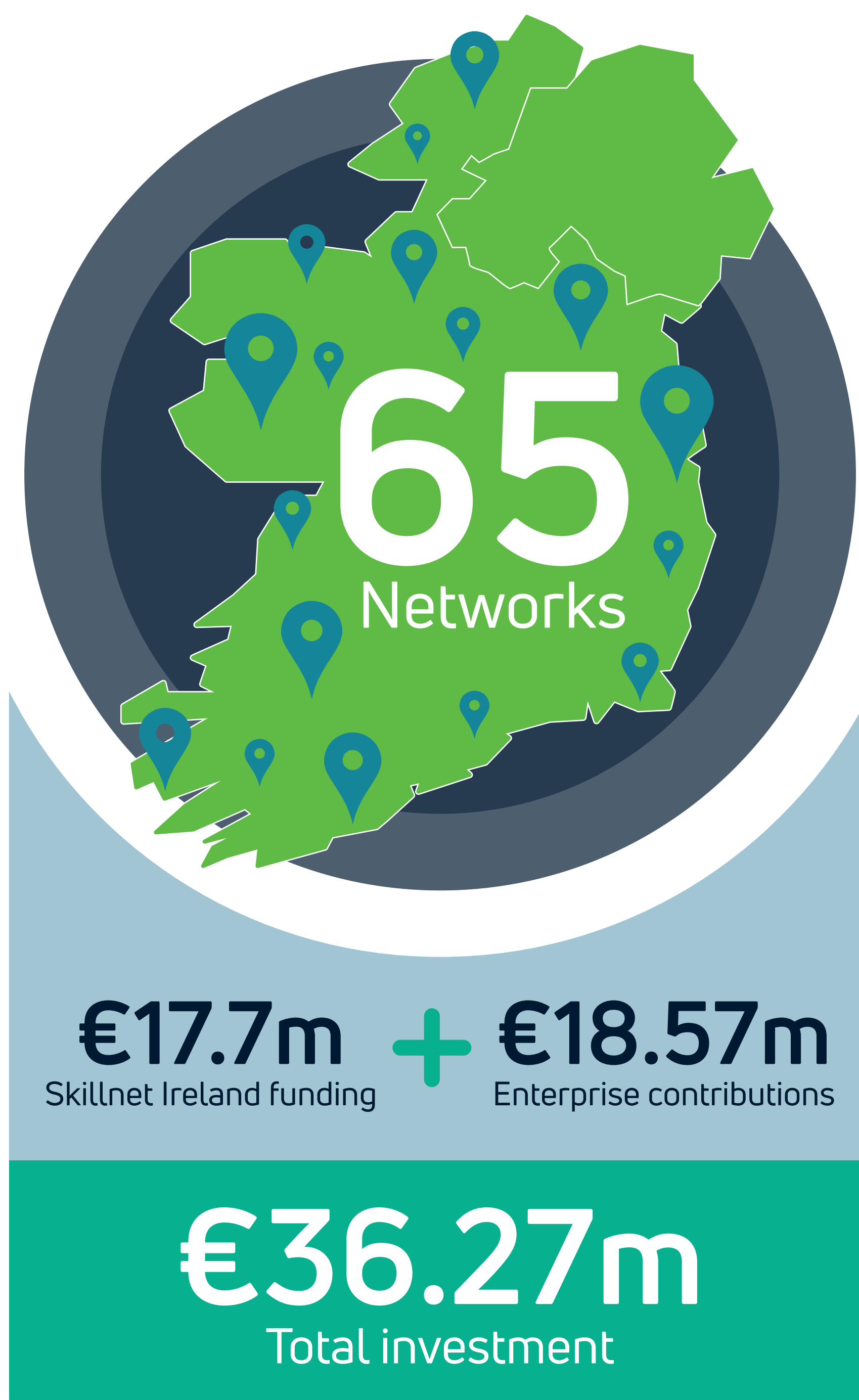
Member
companies **16,462**

Total training
days delivered

441,846



Total training
courses **6,831**



Members by sector



37%
Services

6%
Manufacturing

28%
Agri

6%
ICT/
Technology

10%
Retail and
wholesale

6%
Medtech/
Pharma

7%
Food and
drink

Members by business size



56%
Micro 0-9

26%
Small 10-49

13%
Medium 50-249

5%
Large 250+